

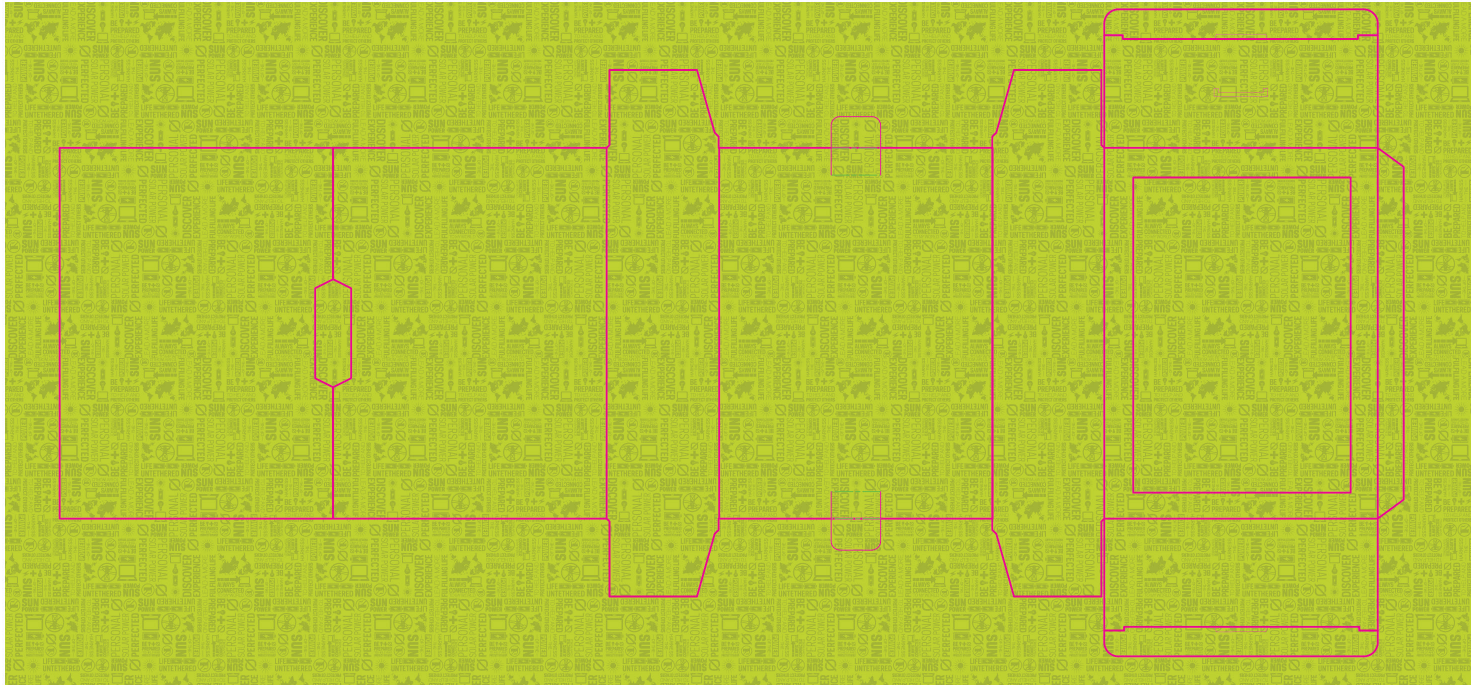
# GOAL ZERO

## SHERPA 50 HIGH-END TECH PACK

# OUTER BOX ART LAYOUT



EXTERIOR BOX



INTERIOR BOX

**COLORS**

4/4 Process Color,  
+ Spot Match Green = PMS 390CP

**FINISHES**

Material should be matte finish with  
UV Spot finish overprint

**MATERIAL**

Board Material = Grey Board 2 MM all around  
Paper Wrap Material = 200 GSM Matte Finish



**NOTES**

Green flooding must match PMS 390CP

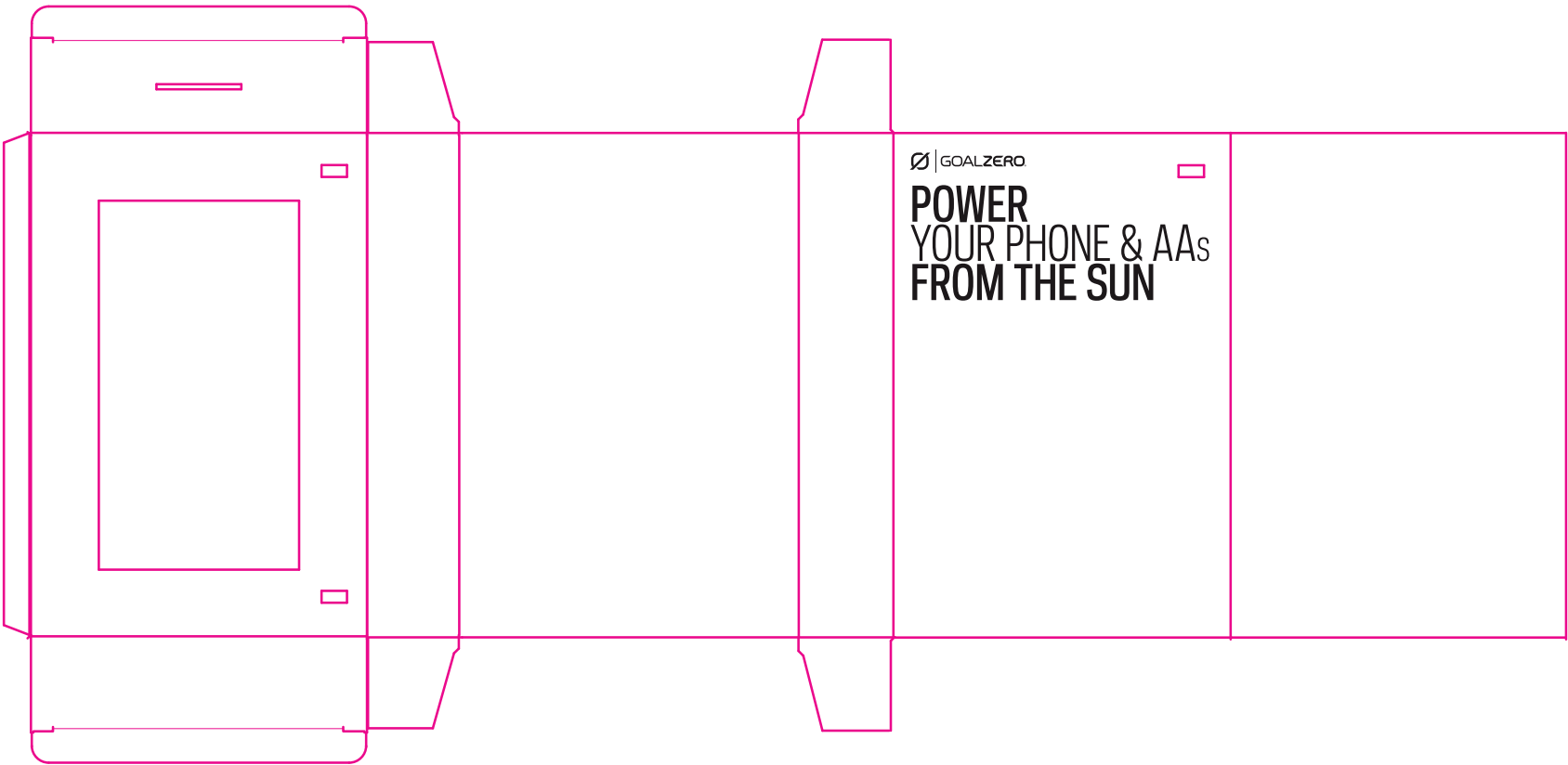
# OUTER BOX UV LAYER

COLORS

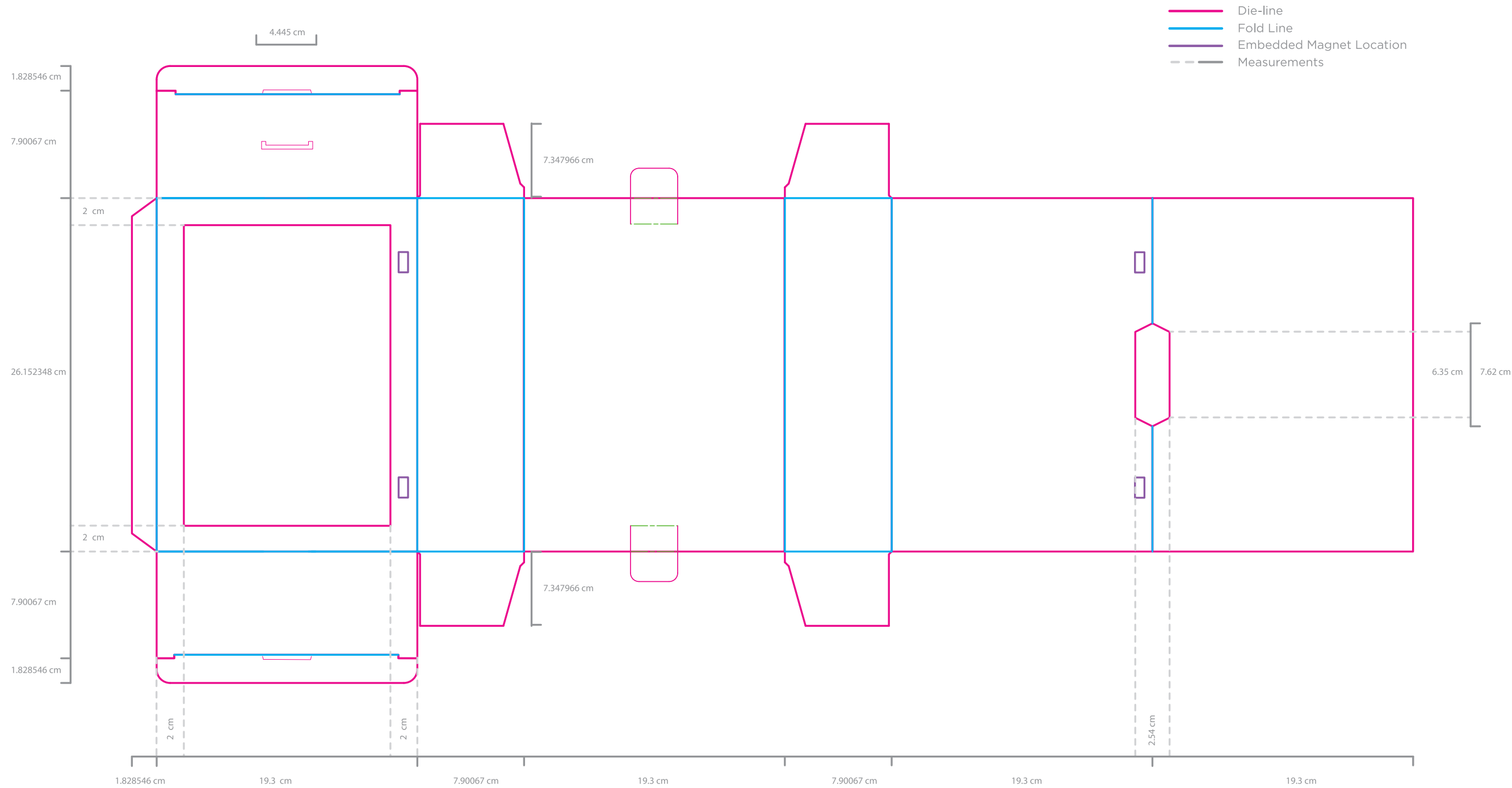
None

FINISHES

UV Spot finish on artwork called out

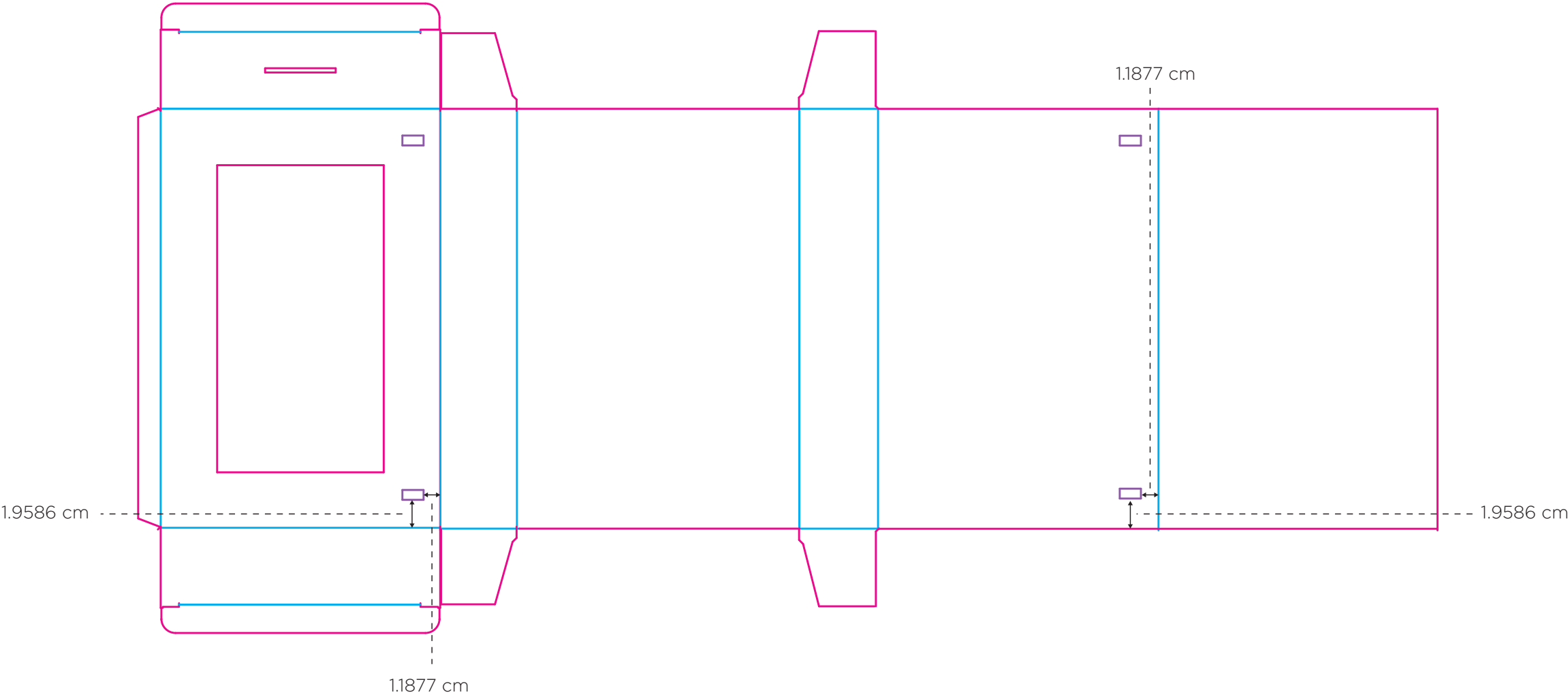


# OUTER BOX MECHANICAL DIE-LINE

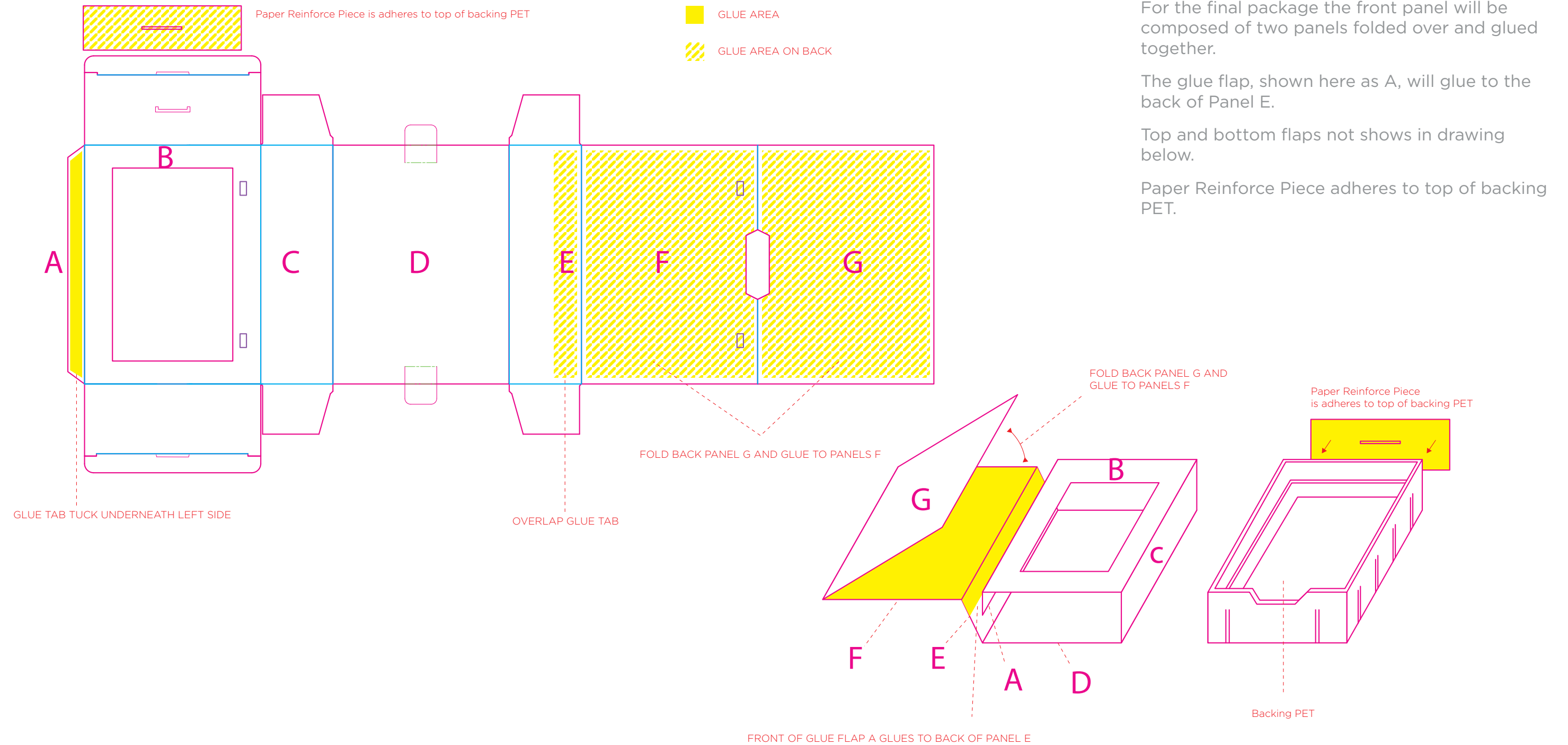


# MAGNET PLACEMENT

**NOTES**  
Magnets strength and thickness will be determined by factory.



# OUTER BOX ADHESIVE INSTRUCTIONS



## DESCRIPTION

For the final package the front panel will be composed of two panels folded over and glued together.

The glue flap, shown here as A, will glue to the back of Panel E.

Top and bottom flaps not shows in drawing below.

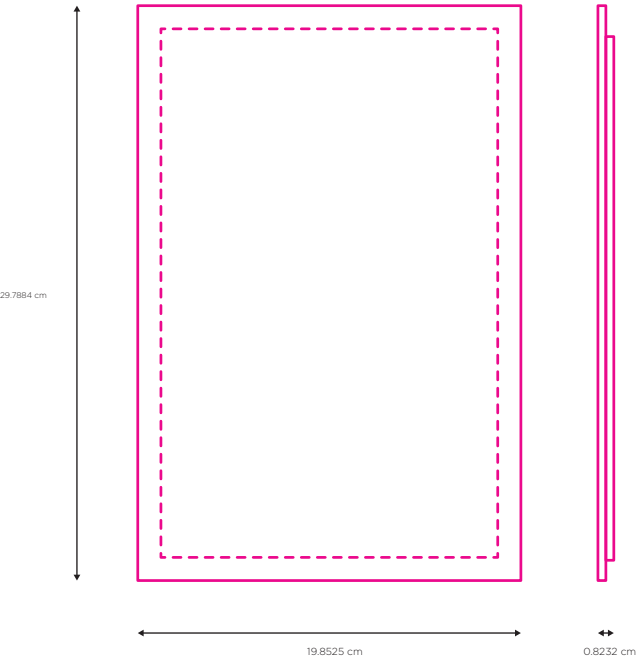
Paper Reinforce Piece adheres to top of backing PET.

# PET MECHANICAL DIE-LINE

- Die-line
- Fold Line
- Embedded Magnet Location
- Measurements

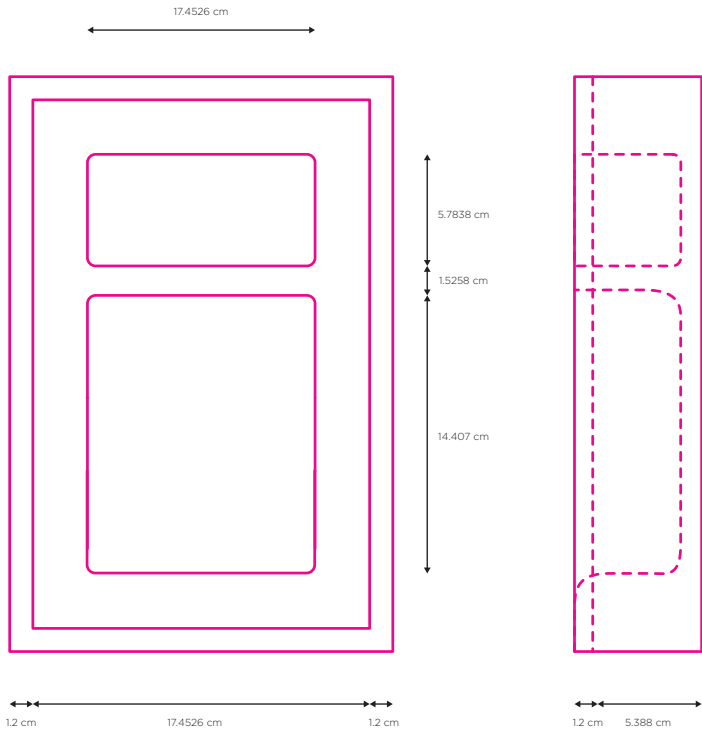
**NOTES**  
PET should be no less than 0.8mm thickness.  
  
Color should be optically clear, such as below picture example.  
  
Drop test must be completed at 3 feet  
  
Concerns : Weight of product may crack PET,  
Must provide drop test reporting to ensure stability in structure.

PET FRONT

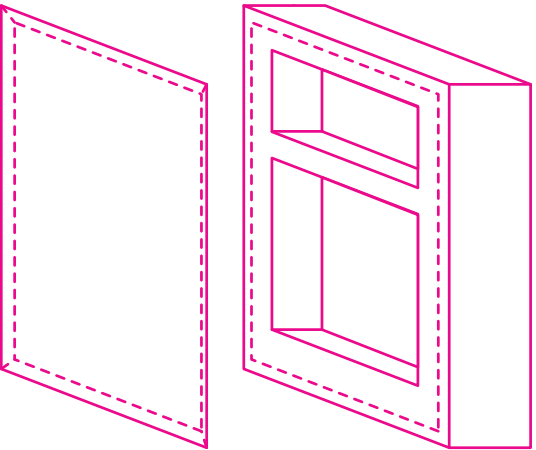


FRONT OF PET IS .25cm FROM INSIDE FRONT OF BOX

PET BACK



3/4 VIEW

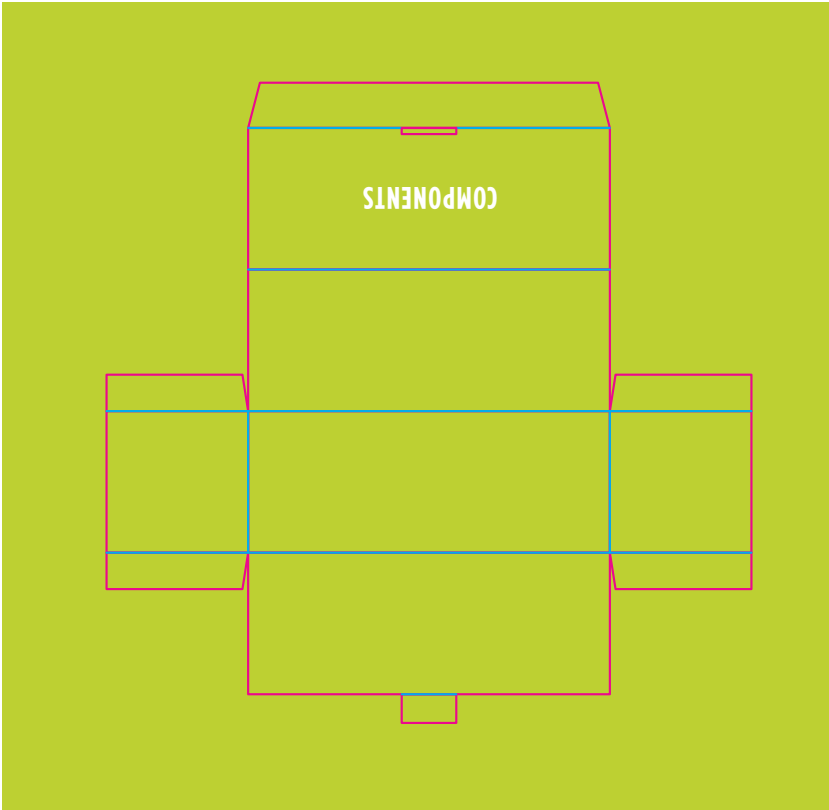


# COMPONENT BOX ART LAYOUT

**COLORS**  
Green color Spot to match = PMS 390CP

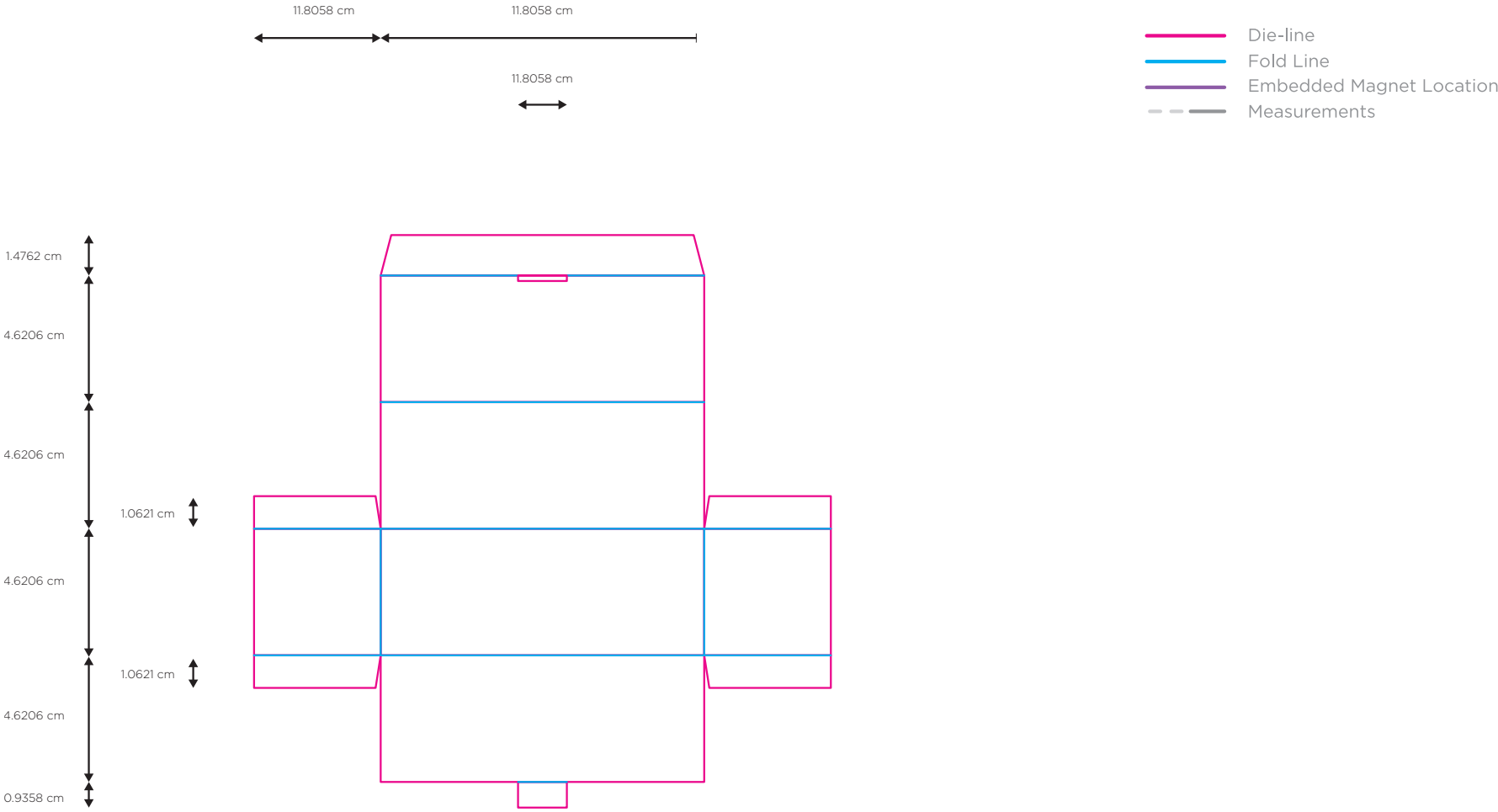
**FINISHES**  
Matte paper

**MATERIAL**  
white 400 gsm



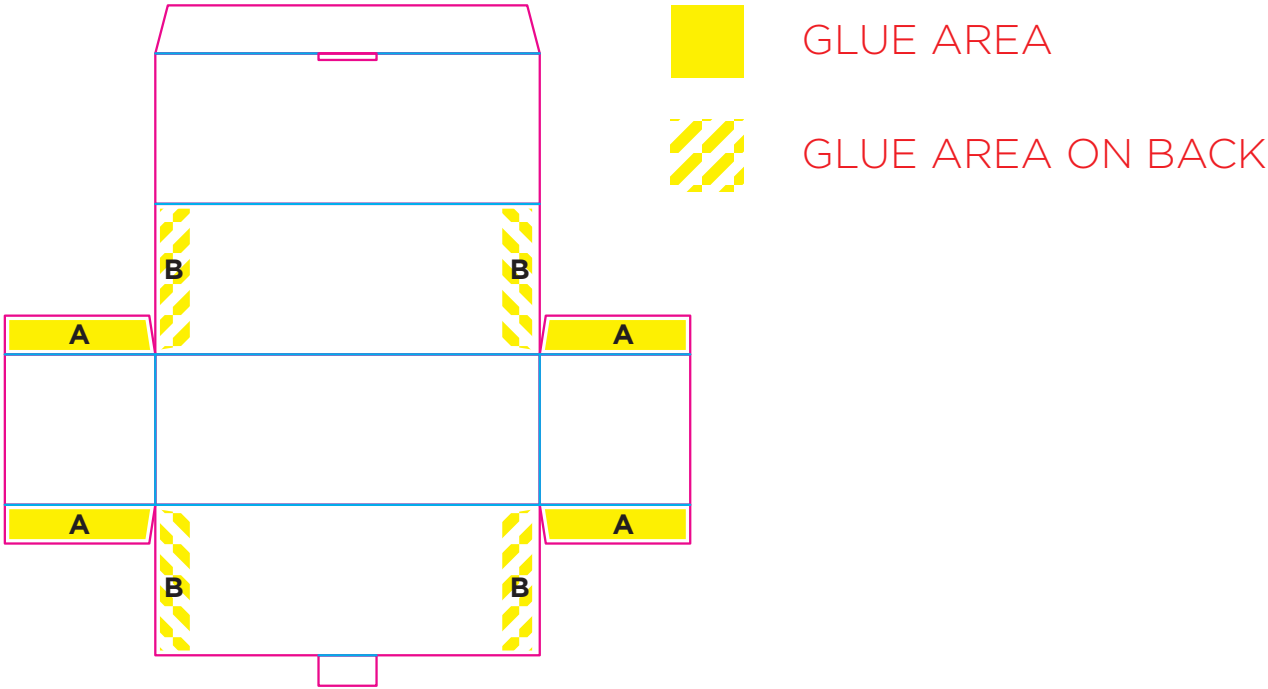


# COMPONENT BOX MECHANICAL DIE-LINE



# COMPONENT BOX ADHESIVE INSTRUCTIONS

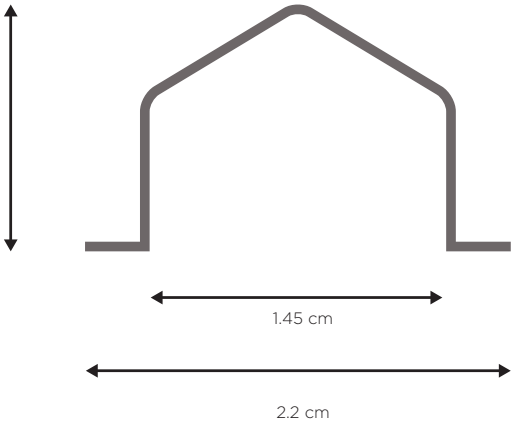
**DESCRIPTION**  
For the final package, all panels labeled A will fold in and glue to the backside of panels labeled B.



# STEEL HANGER

**NOTES**  
Steel should be 1.8mm thick all the way around

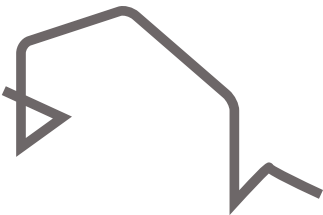
FRONT



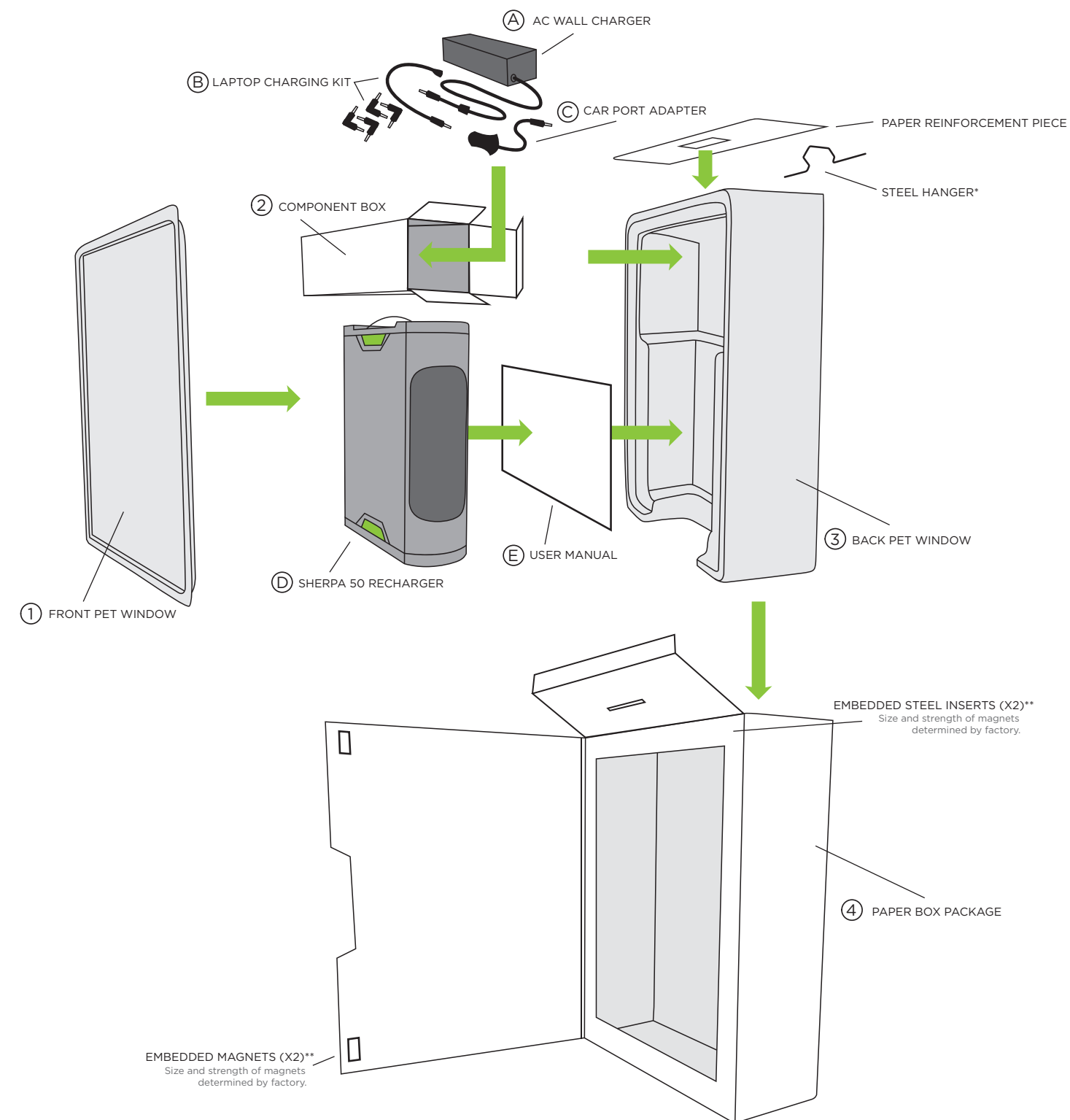
SIDE



3/4 VIEW



# PACK OUT



## PACKAGING

1. FRONT PET WINDOW
2. COMPONENT BOX
3. BACK PET WINDOW
4. PAPER BOX PACKAGE

## PRODUCT LIST

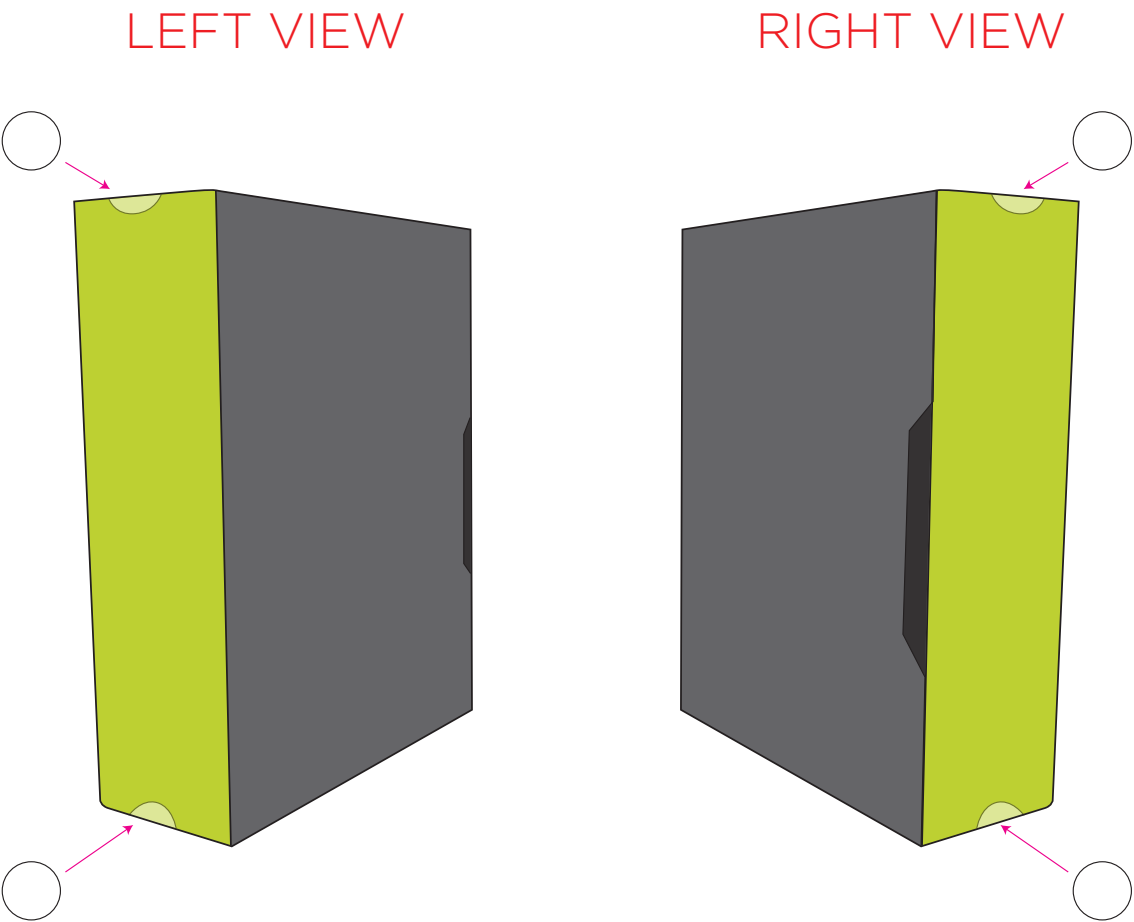
- A. AC WALL CHARGER
- B. LAPTOP CHARGING KIT
- C. CAR PORT ADAPTER
- D. SHERPA 50 RECHARGER
- E. USER MANUAL

\*STEEL HANGER SHOULD BE INSTALLED UNDER PLASTIC BACKING FROM THE BACK OF THE PACKAGE.

\*\*SIZE AND STRENGTH OF EMBEDDED MAGNETS AND STEEL INSERTS WILL BE DETERMINED BY FACTORY

# STICKER PLACEMENT

**PACKAGING**  
4 adhesive stickers must be placed on box corner joints as shown in picture, overlapping side and top/bottom panels.



ADHESIVE STICKER DIMENSIONS

○ ↑↓ 3.35 cm

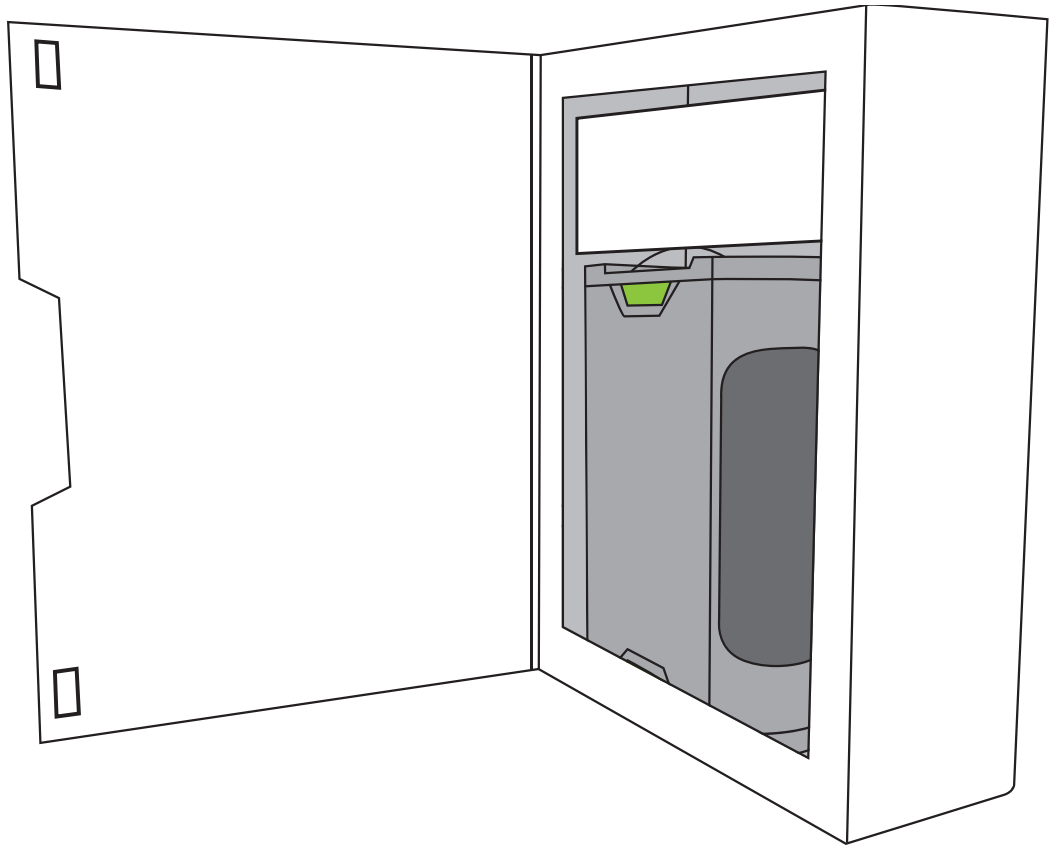
# FINAL PACKAGE

**DESCRIPTION**  
Example of how final product should look when completely assembled.

Should be Visible:  
Sherpa 50 Charger

Should be Hidden from sight when package is closed:

- AC Wall Charger
- Laptop Charging Kit
- Car Port Adapter
- User Manual



# PRODUCT DETAILS AND CONCERNS

---

1. Paper for box must be 600 gsm and match quality of paper sample provided by Goal Zero.
2. Clamshell should be made with PET at no less than 0.8 mm thickness.
3. Structural rigidity must meet standards. This includes:
  - Package must pass hang tab test.
  - Package must pass drop test.
  - Package must pass shake test.
4. Green must match Pantone 390 CP.
5. Steel hanger should be 1.8mm thick
6. Spot UV
7. All cords to be stuffed in poly bag before placing in cord box.