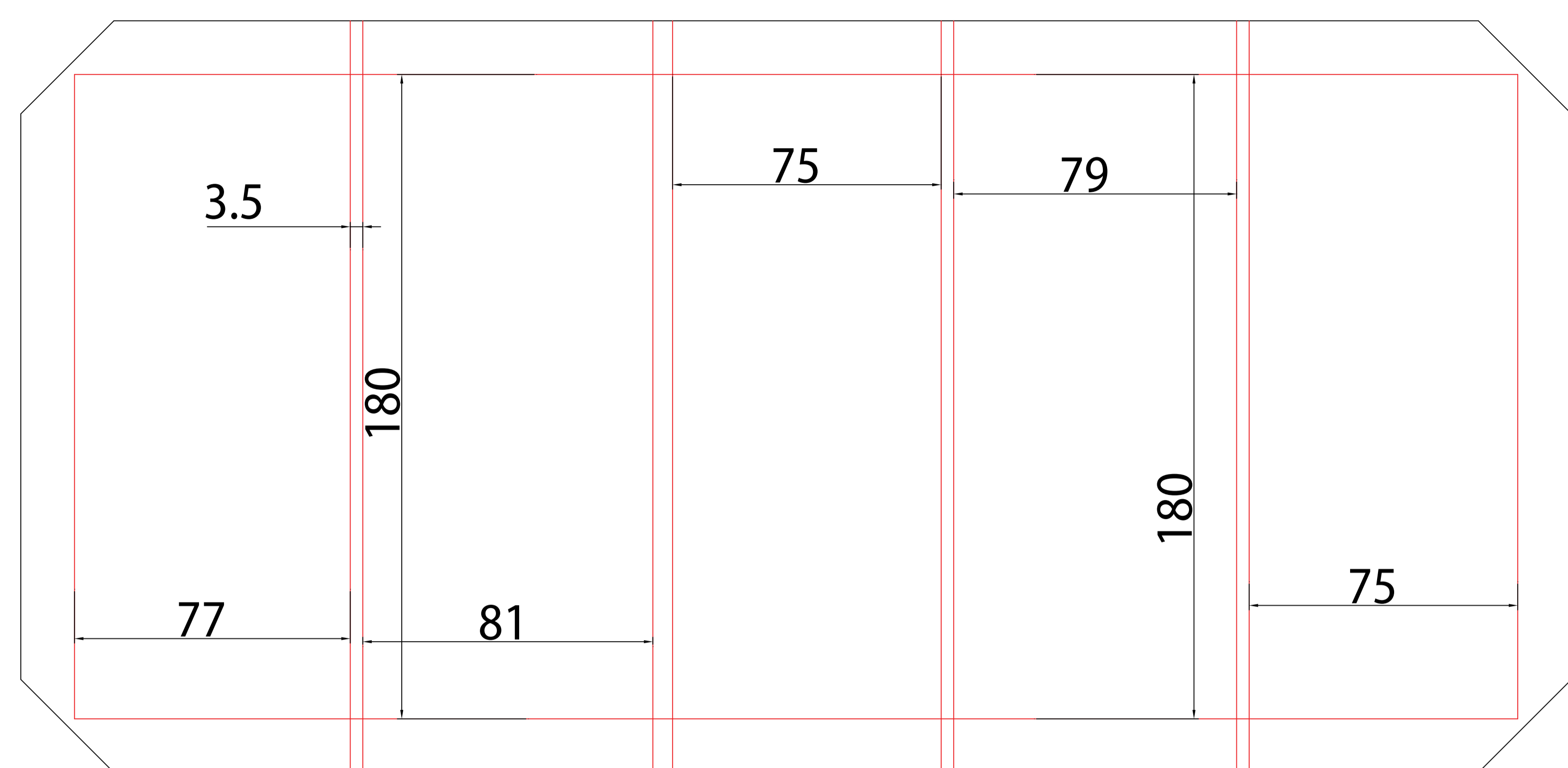


Fold Flat, Gate Fold Premium Box

Outer Wrap



DESCRIPTION TEXT

Paper-wrapped rigid folding box with magnetic closure and fold-flat design feature.

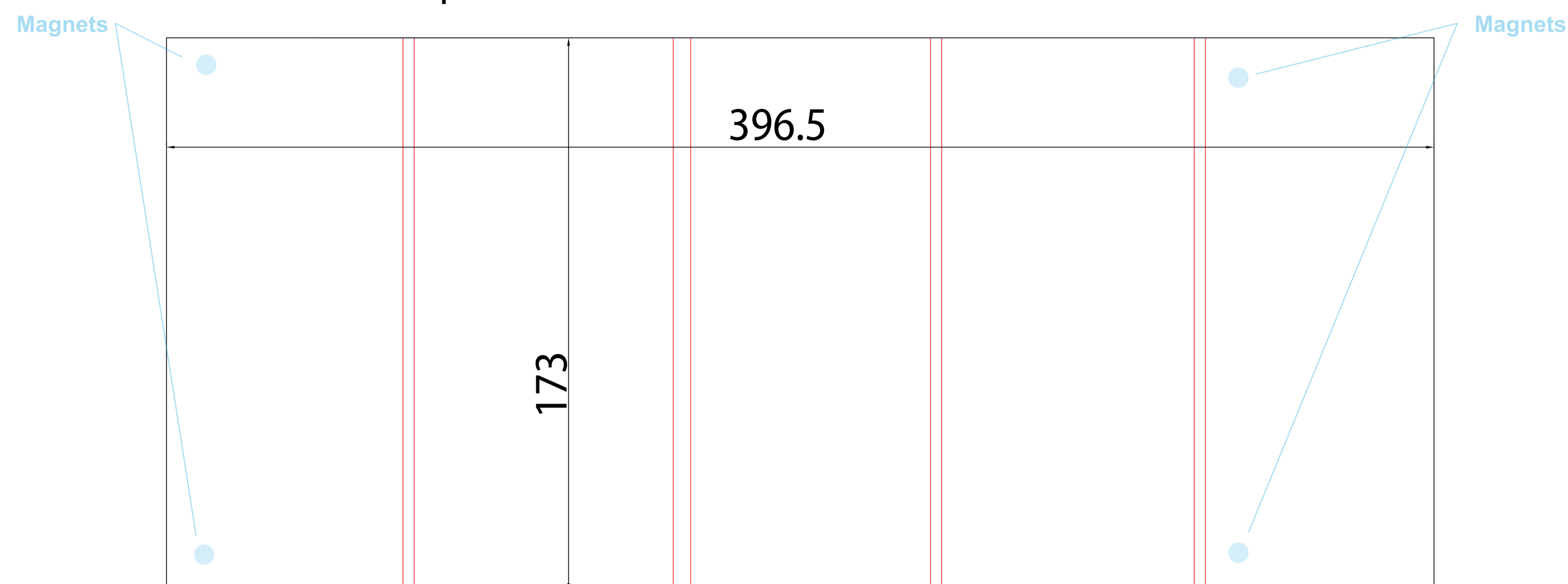
Paper: 250 gsm paper (Please specify any specialty paper)

Board: 1200gsm greyboard

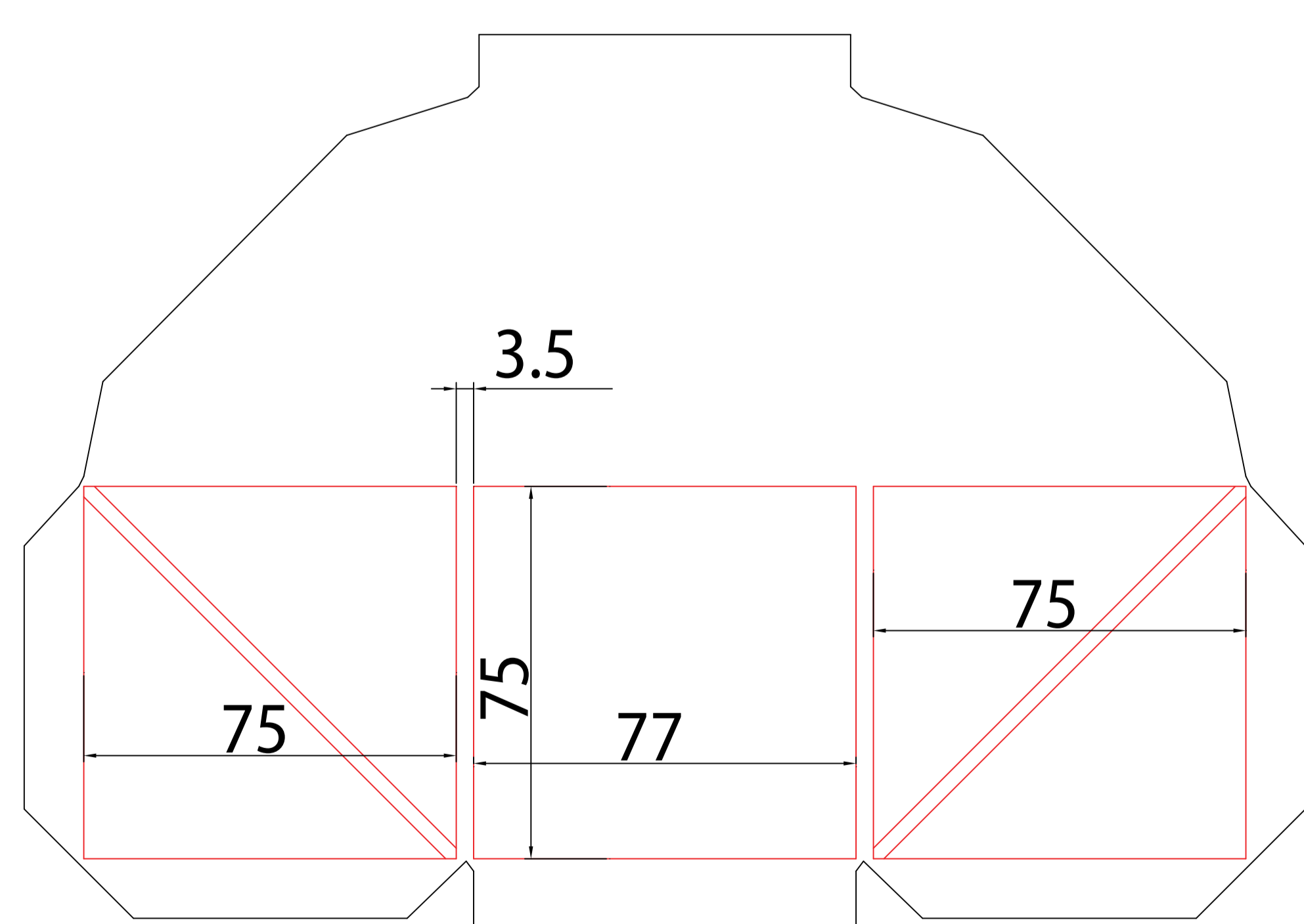
Features: Inset magnets includes (2) 10mm diameter x 2mm thick magnets with (2) 10mm diameter metal receiving plates.

Printing: (Please specify all printing colors, techniques, coatings or treatments)

Inner Wrap



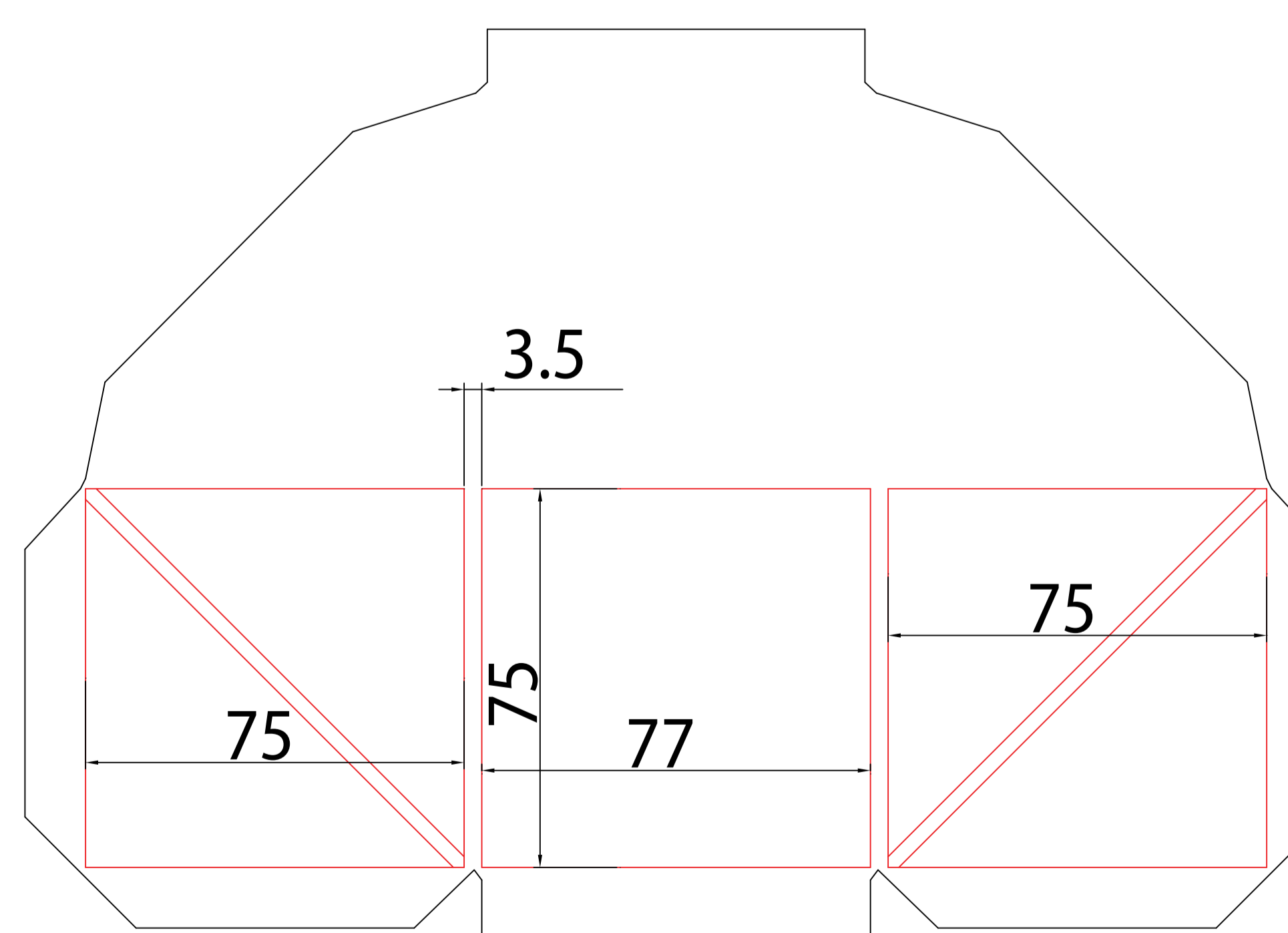
Top Wrap



Outside Fold Down

Inside Fold Down

Bottom Wrap



Outside Fold Down

Inside Fold Down